

Aldreds
Estate Agents

11 Ravelin House St. Peters Plain

, Great Yarmouth, NR30 2PZ

£50,000



11 Ravelin House St. Peters Plain

, Great Yarmouth, NR30 2PZ

Situated conveniently for the town centre and St Georges Park we are pleased to offer a first floor, purpose built, retirement flat for the over 55's with warden control. The property offers a communal entrance with lift access, hallway, living room, kitchen, two bedrooms and shower room and has the benefits of electric heating, double glazed windows and fitted carpets where laid. Please note we offer a 70% interest in this flat with the remaining share being held by the Orbit Housing Association. Early viewing is recommended.

Entrance Hall

Pull cord alarm, entry phone handset, night storage heater, built in double size storage cupboard, airing cupboard with pressurised hot water cylinder.

Living Room

14'7" x 10'4" (4.47 x 3.17)

Double glazed window to front aspect, night storage heater, telephone point, tv point, open access to:

Kitchen

Fitted with white wall and matching base units with work surface over, Stainless steel sink and drainer, part tiled walls, electric cooker, fridge, pull cord alarm, double glazed window to side aspect, space for a fridge.

Bedroom 1

13'5" x 8'7" (4.09 x 2.64)

Double glazed window to front aspect, night storage heater, wardrobe cupboard.

Bedroom 2

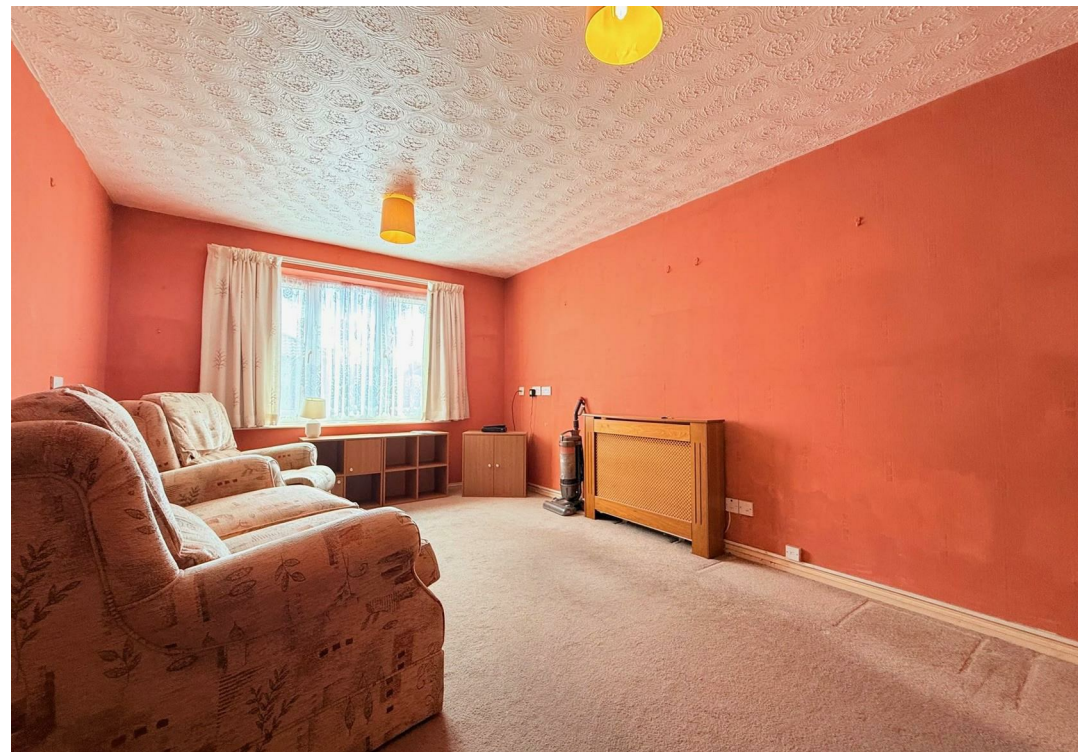
14'5" x 6'6" (4.41 x 1.99)

Double glazed window to front aspect, electric panel heater.

Shower Room

6'7" x 5'4" (2.03 x 1.64)

Tiled shower cubicle with electric shower fitting, low level wc, pedestal wash basin, electric fan heater, tiled flooring, extractor fan.





Tenure

Leasehold

99 year lease from May 2009

Current service charge £206.00 per month (variable).

Services

Mains water, electric and drainage. There are communal areas to the ground floor with a communal laundry room, lounge and communal gardens. There is a residents parking area. All applicants will be referenced by Orbit and the dwellings are available to the over 55's only.

Council Tax

Great Yarmouth Borough Council - Band 'A'

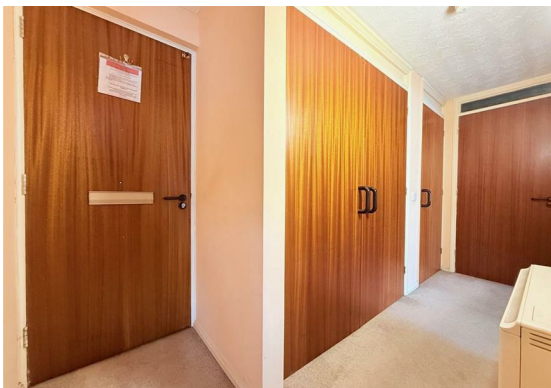
Directions

From Haven Bridge proceed south along Hall Quay, follow the river past the town hall, continue for a further one third of a mile, turn left into Nottingham Way, continue to the end of the road, turn right into King Street then sharp left into St Peter's Road, take the first turning left into Deneside, take the first turning right just past the Greek Orthodox church into Lancaster Road, then the first turning left into St Peter's Plain, continue straight over the next crossroads, continue for approximately 150 yards where the property can be found left hand side.

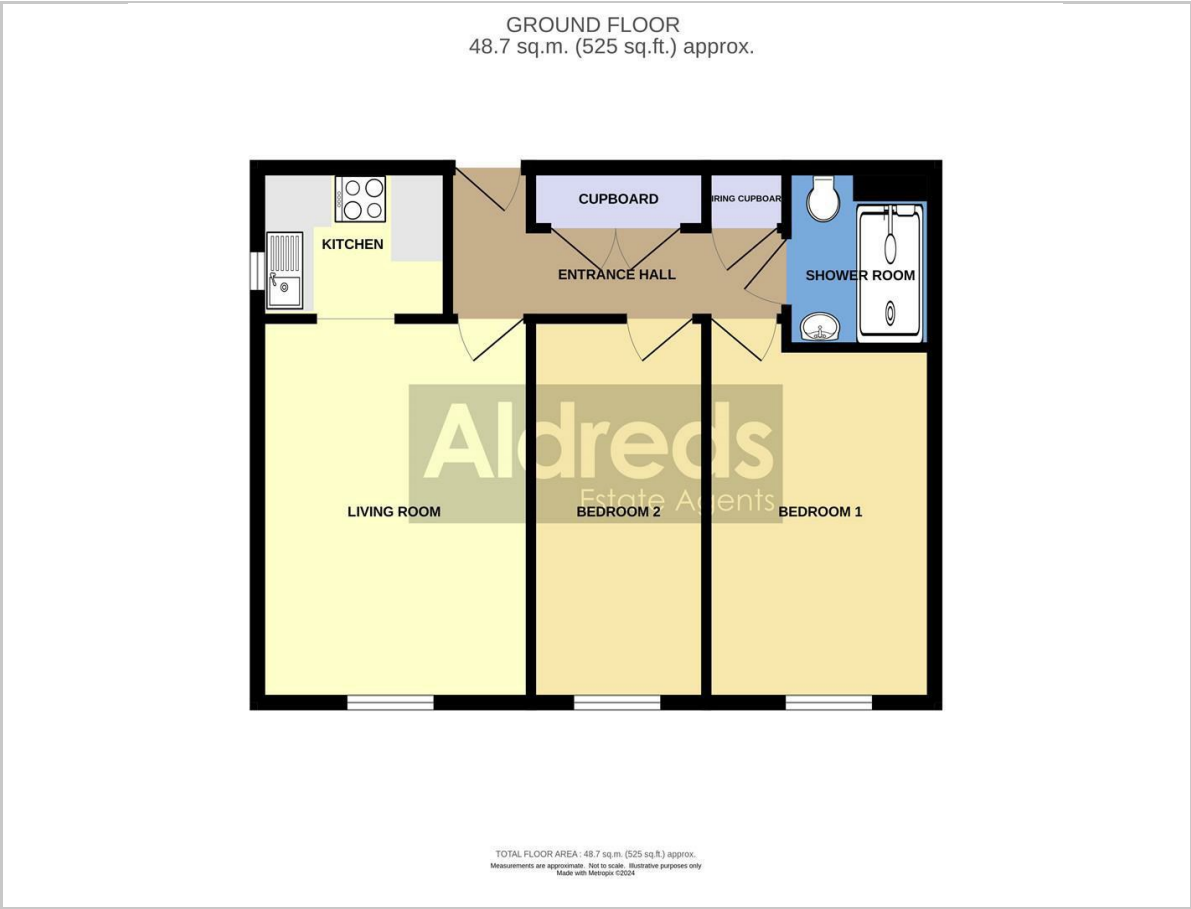
Location

Great Yarmouth is the largest resort on the East Norfolk coast with its Historic Market Place and varied selection of shops. The town has a busy port and the rivers Yare and Bure gives access to the Norfolk Broads. There are Museums * Race Course * Heliport * Beach * Schools for all ages * District Hospital approximately 5 miles South. Bus and rail services connect with Norwich.

Ref: Y11947/01/24/CF



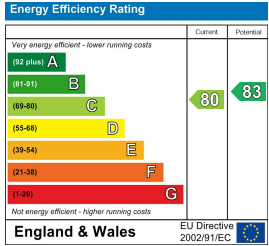
Floor Plan



Area Map



Energy Efficiency Graph



Viewing

Please contact our Aldreds Great Yarmouth Office on 01493 844891 if you wish to arrange a viewing appointment for this property or require further information.

Disclaimer
These particulars are issued on an understanding that all negotiations shall be conducted through Messrs. Aldreds. Please note: Messrs. Aldreds for themselves and for the vendors or lessors of this property whose agents they are given notice that: 1. Particulars are set out as a general outline only for guidance of intending purchasers or lessees, and do not constitute nor constitute part of, an offer or contract. 2. All descriptions, dimensions, references to condition and necessary permissions for use and occupation, and other details are given without responsibility and any intending purchasers or tenants should not rely on them as statements or representations of fact but must satisfy themselves by inspection or otherwise as to the correctness of each of them. 3. No person in the employment of Messrs. Aldreds has any authority to make or give any representation or warranty whatever in relation to this property. 4. If you are proposing to visit the property and are travelling some distance please check with Aldreds on the issue of availability prior to travelling. 5. Aldreds Property Consultants and associated services may offer additional services to the prospective purchaser for which they will be entitled to receive a commission. Aldreds are pleased to be working with Mortgage Advice Bureau. They're an award-winning mortgage broker with over 1,400 advisers across the UK, and have access to over 12,000 mortgage products from over 90 lenders. Aldreds Estate Agents Ltd receive a commission of £200 on each completed case. Your home may be repossessed if you do not keep up repayments on your mortgage. There may be a fee for mortgage advice. The actual amount you pay will depend upon your circumstances. The fee is up to 1%, but a typical fee is 0.3% of the amount borrowed. Mortgage Advice Bureau is a trading name of Mortgage Seeker Limited which is an appointed representative of Mortgage Advice Bureau Limited and Mortgage Advice Bureau (Derby) Limited which are authorised and regulated by the Financial Conduct Authority. Mortgage Seeker Limited Registered Office: Lovewell Blake, Sixty Six North Quay, Great Yarmouth, Norfolk, NR30 1HE. Registered in England Number: 03721415. 6. Potential purchasers should check with their providers that the broadband and mobile phone coverage they would require is available.